

IP Speakers work with IBS

IBS Software setting

all speakers must set as a broadcast point

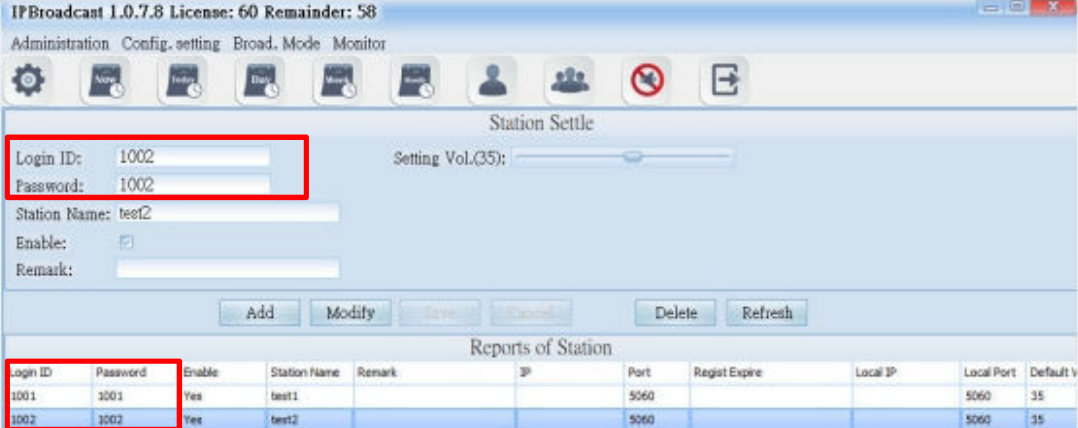
So please open login ID and password for speakers to register.

5.1. Setting of Broadcast Points

5.1.1 Establishment of broadcast points

Click [Config.setting]-->[Station Set.]

Establish the verification account/password and name of broadcast points in the system, and so on



The screenshot displays the IPBroadcast 1.0.7.8 software interface. The title bar indicates the license status: "IPBroadcast 1.0.7.8 License: 60 Remainder: 58". The main menu includes "Administration", "Config. setting", "Broad. Mode", and "Monitor". The "Station Settle" configuration window is active, showing fields for "Login ID" (1002), "Password" (1002), "Station Name" (test2), "Enable" (checked), and "Remark". A "Setting Vol.(35)" slider is also visible. Below the configuration fields are buttons for "Add", "Modify", "Save", "Cancel", "Delete", and "Refresh".

Below the configuration window is a "Reports of Station" table with the following data:

Login ID	Password	Enable	Station Name	Remark	IP	Port	Regist Expire	Local IP	Local Port	Default V
1001	1001	Yes	test1			5060			5060	15
1002	1002	Yes	test2			5060			5060	15

ip speaker setting (ip speaker default ip http://192.168.0.100 username: voip , Password: 1234)

Speaker must register to IBS as a broadcast point

Log in IP Speaker WEB interface, click [SIP Settings]-->[Service Domain] fill the broadcast point account, password, the broadcast system's host IP and port number in corresponding columns of the program of the broadcast system

Service Domain Setting

Active: ON OFF

Register Name: 1001

Register Password: 1001

IPB Server: 192.168.0.77:3092

Status: Registered

Submit Reset

You just open login id and password in IBS Software Speaker can register to IBS

IBS Software's ip

Press [Submit]-->[Save Change] until IP Speaker restarts, to register the broadcast system program.

Users can also check the online state of the broadcast point in the broadcast System

Service Domain Settings

Active: ON OFF

Register Name: 1001

Register Password: 1001

IPB Server: 192.168.0.77:3092

Status: Registered

Submit Reset

Save Change

IBS Software

you can set several speakers as a group speaker

e.g speakers in 1F, can set group name:1F

you can voice or schedule broadcasting in 1F group

all speakers of 1f group can hear

5.2. Group Name

Click [Config.setting]-->[Group Naming]

The system has arranged 16 broadcast groups in advance, thus users can define the name of each broadcast group independently

***** In the following group name page, input the group name in each column according to group code, and then press enter *****

Group Broad.	Group Name
01	test group
02	
03	
04	
05	
06	
07	
08	
09	
10	
11	
12	
13	
14	
15	
16	

5.3. Group Setting

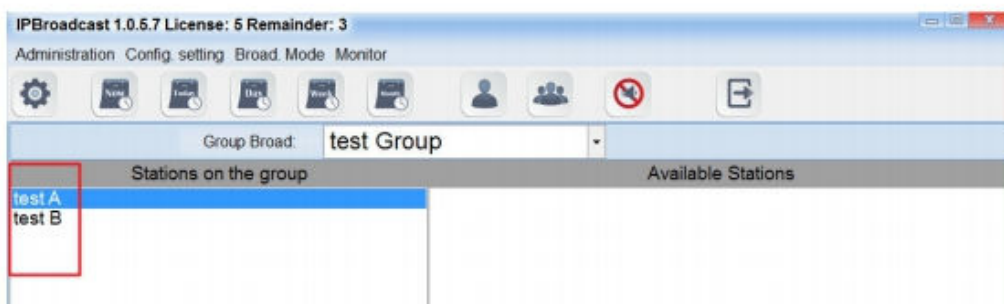
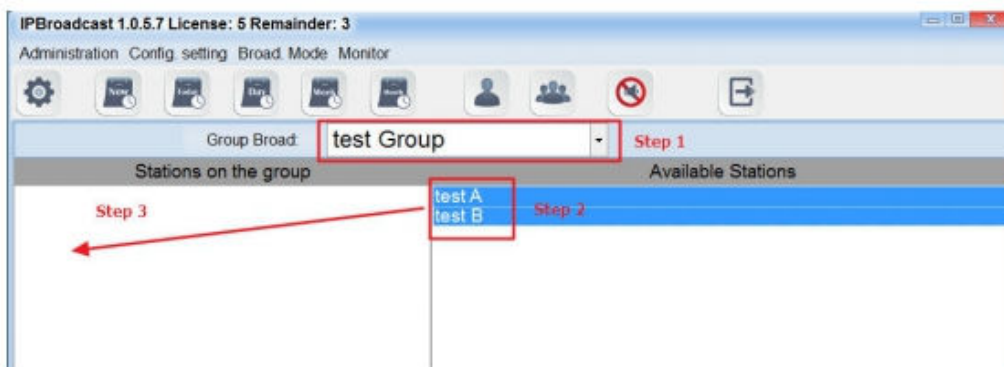
Click [Config.setting]-->[Group Set.]

Steps of editing groups:

Step 1. Select the broadcast group name to be set

Step 2. Select the broadcast group names to be added into the group in the column of broadcast points

Step 3. Select a single or press shift on the keyboard to select multiple broadcast point names, and then press the left key of the mouse and move it to the column of group broadcast points to finish the setting of adding groups to the broadcast points. On the contrary, to delete the existing broadcast points in the group, select them from the group broadcast point column and press the left key of the mouse, and move it to the column of group broadcast points to finish the setting of deleting broadcast points in the group

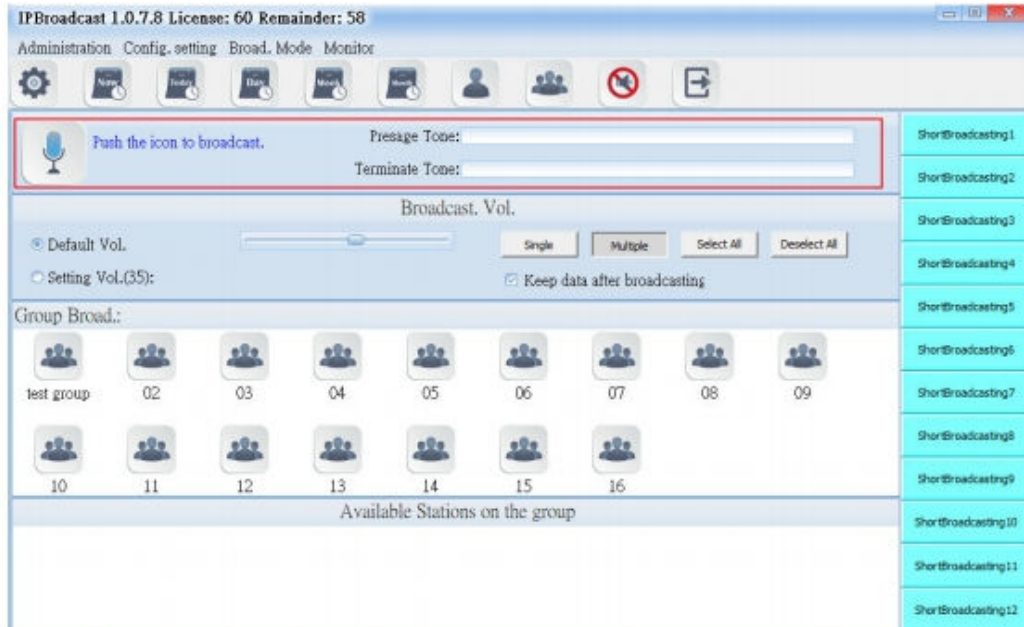





1. Voice broadcasting immediately

Select [Broad.Mode]-->[Group Broad.]

Users can conduct broadcast to a single or multiple groups

6.1.1 Broadcast startup diagram and sound file setting



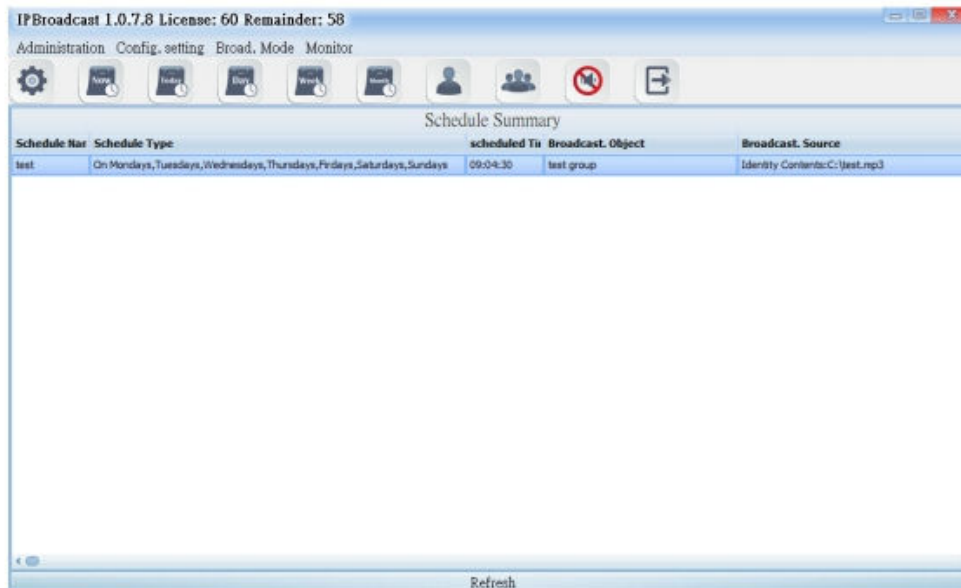
	Group broadcast startup diagram
	Broadcast point connecting diagram
	Diagram of being able to start broadcast
Presage Tone	Select the path storing the prelude sound and file name; the words of the folder names of the sound file and storage path shall have no space, the sound file format is MP3 or WAV
Terminate Tone	Select the path and file name of ending sound file storage; the words of the folder names of the sound file and storage path shall have no space, the sound file format is MP3 or WAV

2. schedule broadcasting

6.4. Schedule Broadcast

Click "Broadcast Mode" --> "Schedule Broadcast" --> "Schedule Summary."

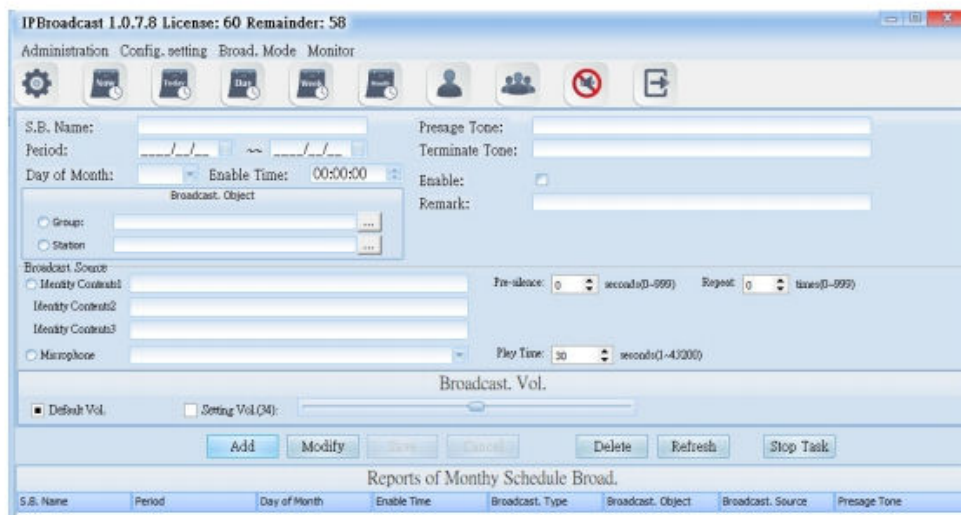
Schedule summary will record all the schedules which have already been set.



6.5. Monthly Schedule

Select [Broad.Mode] --> [Scheduled broadcasts] --> [Monthly Schedule]

Users can arrange a single execution day in every month, to conduct broadcast to a single or group broadcast points. The broadcast source can be sound file or external sound source



Please read more in user manual p.37

<http://www.portech.com.tw/data/IP%20Broadcasting%20System%20user%20manual.pdf>